



State of Ohio 2000 School Building Report Card

Penfield Elementary School Keystone Local School District

Lorain County

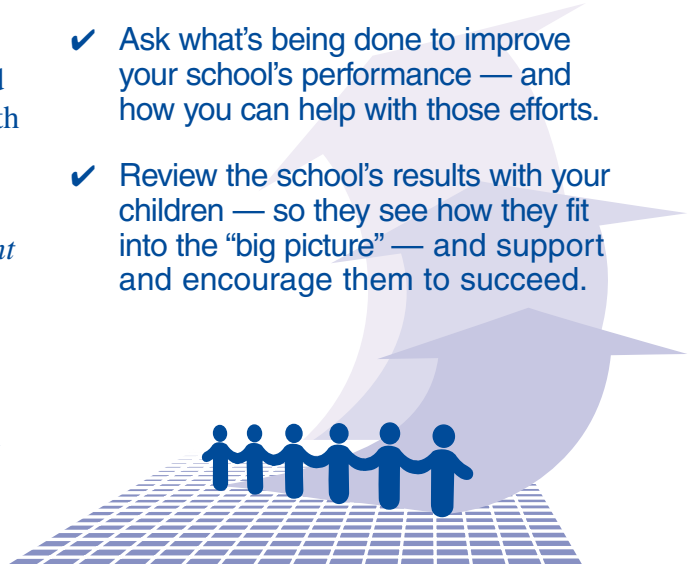
The purpose of this report card is to provide you with information about how well your school is doing — where it is succeeding and where there is room for improvement.

While it cannot tell you everything about your school's performance, the report card is a good starting point for discussions with teachers, administrators and school board members in your community.

Few factors have greater impact on student performance than parent and community involvement. For that reason, the State Board of Education and Ohio Department of Education encourage you to contact school building staff for more information — and to find out how you can become more involved in efforts to improve the overall performance of your school.

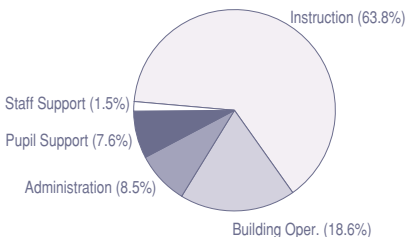
What To Do With This Information

- ✓ Visit your school — see how teaching and learning are taking place and ask questions.
- ✓ Ask what's being done to improve your school's performance — and how you can help with those efforts.
- ✓ Review the school's results with your children — so they see how they fit into the "big picture" — and support and encourage them to succeed.



SCHOOL PROFILE (1998-99 DATA)

YOUR SCHOOL'S SPENDING PER PUPIL



GENERAL

	Your School	State Average for Elementary Schools
Enrollment	377	398
Students with Disabilities (%)	10.6	11.6
Students in the School Less Than Half the Year (%)	11.5	12.0
Teacher Attendance Rate (%)	94.7	95.8

ANNUAL SPENDING PER PUPIL*

	Your School	State Average for Elementary Schools
Instruction (such as teacher salaries and classroom materials)	\$2,658	\$3,707
Building Operations (such as utilities, maintenance, and repairs)	\$776	\$1,031
Administration (such as administrators and office staff salaries and office supplies)	\$353	\$348
Pupil Support (such as librarians, counselors, and nurses)	\$315	\$477
Staff Support (such as teacher training and college courses)	\$66	\$81
Total Annual Spending Per Pupil	\$4,168	\$5,644

* May include money from bond levies to fund start-up instructional costs for new buildings.

YOUR SCHOOL'S PERFORMANCE RESULTS

Proficiency tests are given every year to Ohio students in grades 4, 6, 9 and 12 to test their knowledge and skills in core subject areas.

State Proficiency Tests

1998–99 Performance Results and Comparisons

Minimum state performance standards have been established by law. These columns show how your school performed against the state standards, and in comparison to the district and the state averages for the 1998–99 school year.

3-Year Performance Results

This section shows you whether your school's performance has improved or declined over the last 3 years.

PERCENTAGE OF STUDENTS WHO PASSED THE TESTS								
		State Performance Standard	Your School's Results	Your District's Average	State Average	1996-97 Results	1997-98 Results	1998-99 Results
4th	Citizenship	75%	60.7	68.3	70.2	44.3	56.1	60.7
	Mathematics	75%	31.0	41.3	50.6	23.7	32.1	31.0
	Reading	75%	48.8	55.3	59.2	35.0	44.6	48.8
	Writing	75%	28.6	41.4	64.0	67.9	53.6	28.6
	Science	75%	47.6	53.2	52.6	30.4	40.4	47.6
	All Tests	NS	13.1	18.6	31.9	NA	NA	13.1
6th	Citizenship	75%	NR	75.7	71.3	NR	NR	NR
	Mathematics	75%	NR	54.6	51.4	NR	NR	NR
	Reading	75%	NR	36.2	52.1	NR	NR	NR
	Writing	75%	NR	78.9	78.9	NR	NR	NR
	Science	75%	NR	46.1	46.5	NR	NR	NR
	All Tests	NS	NR	23.7	32.5	NA	NA	NR

Other Results

1998–99 Performance Results and Comparisons

	State Performance Standard	Your School's Results	Your District's Average	State Average
--	----------------------------	-----------------------	-------------------------	---------------

3-Year Performance Results

	1996-97 Results	1997-98 Results	1998-99 Results
--	-----------------	-----------------	-----------------

Student Attendance Rate (%)	93%	99.6	97.2	93.5	96.6	96.4	99.6
4th Graders Promoted to 5th Grade (%)	NS	92.9	96.3	98.5	97.7	97.1	92.9
6th Graders Promoted to 7th Grade (%)	NS	0.0	100.0	97.6	0.0	0.0	0.0

Questions to Discuss in Your Community

- ✓ Is your school achieving — or close to achieving — each of the state's minimum performance standards?
- ✓ Has your school's performance improved or declined over the last three years?
- ✓ What is your school's attendance policy? How is attendance likely to affect learning and test scores?
- ✓ How is your school doing compared to the overall district and state performance?
- ✓ What efforts are under way to improve areas where results are not satisfactory or where the school is not improving?
- ✓ What efforts are being made to keep students in school?

To obtain your own child's individual performance results, or for more information about your school's performance, contact your school office at (440) 647-4588.

NS = No standard. NA = Not available. NR = Not reported by the school. NC = Not calculated for fewer than 10 students.