



Selecting Evidence-Based Practices

Heather Boughton, Ph.D.

January 17, 2018

Goals for Today

A teacher with dark hair, wearing a purple cardigan over a light-colored shirt, is leaning over a table. She is looking down at three young students who are sitting at the table. The students are holding yellow pencils and appear to be working on papers. The student on the left is wearing a green shirt, the middle student is wearing a yellow shirt with a butterfly design, and the student on the right is wearing a purple shirt. The background shows a window with blinds.

Introduce Concepts and Definitions

5 Steps to Being Empowered by Evidence

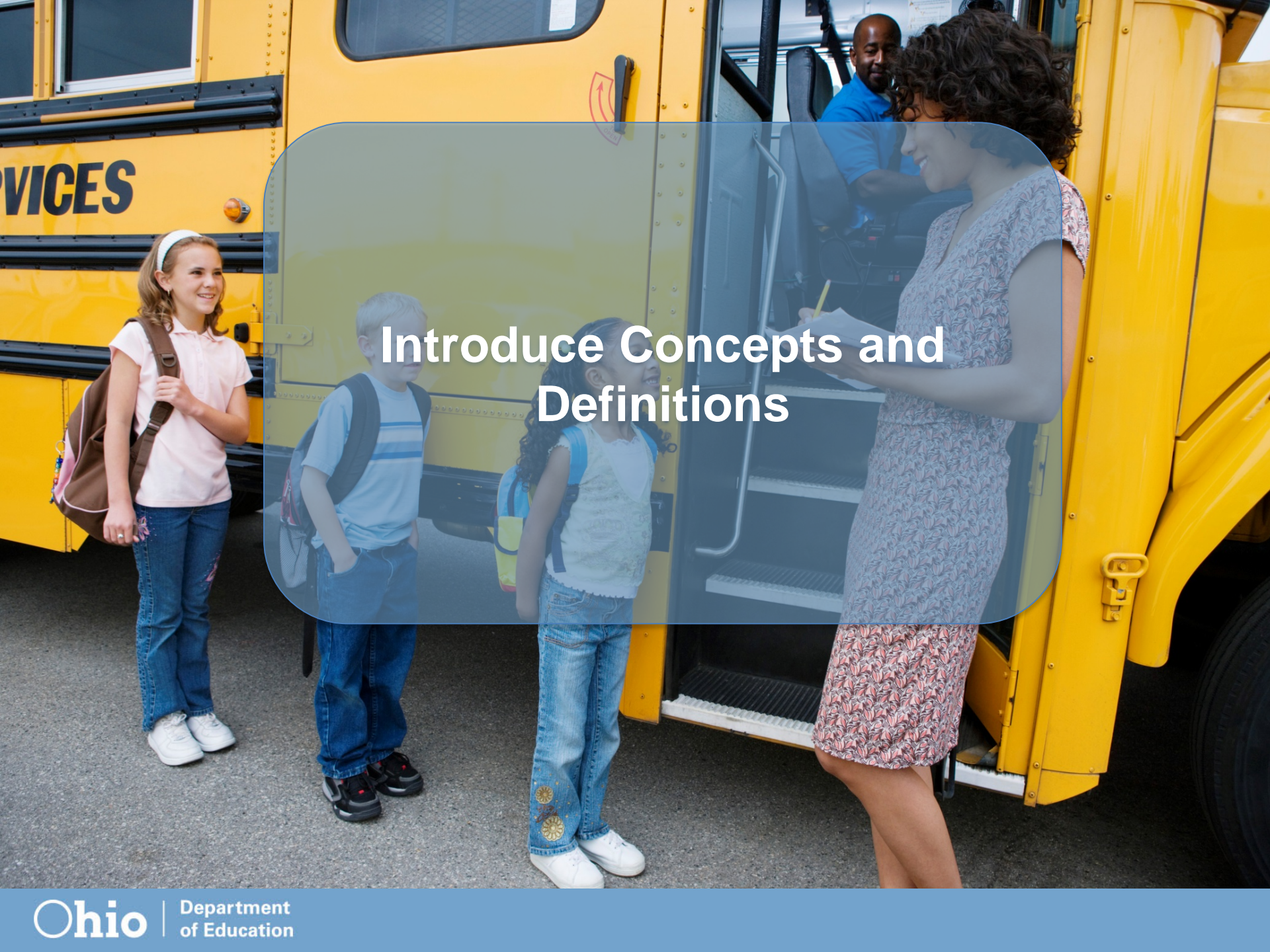
Build Practical Knowledge of How to Select Evidence-Based Interventions

3.5 “C’s” for Today

Confidence

Context

Cycle of Continuous Improvement



Introduce Concepts and Definitions

What does it mean for an intervention to be “evidence-based”?

- **ESSA Definition & Non-Regulatory Guidance**
- Practically Speaking

What does it mean for an intervention to be “evidence-based”?

ESSA (Section 8002) defines evidence-based using the following language:

“...the term ‘evidence-based’ when used with respect to a State, local education agency, or school activity, means an activity, strategy, or intervention that –

- (i) Demonstrates a statistically significant effect on improving student outcomes or other *relevant outcomes* based on –
 - Strong evidence from at least one well-designed and well-implemented quasi-experimental study;
 - Moderate evidence from at least one well-designed and well-implemented quasi-experimental study;
 - Promising evidence from at least one well-designed and well-implemented correlational study with statistical controls for selection bias; or
- (ii) (I) demonstrates a rational based on high quality research findings or positive evaluation that such activity, strategy, or intervention is likely to improve student outcomes or other relevant outcomes; and
 - (II) includes ongoing efforts to examine the effectiveness of such activity, strategy, or intervention.

What does it mean for an intervention to be “evidence-based”?

- Interventions meet different tiers of evidence.
- Tiers are based on the design and outcomes of research evaluations.

What does it mean for an intervention to be “evidence-based”?

- Tiers 1 & 2 interventions are supported by “strong” and “moderate” research.
- Tier 3 interventions are supported by “promising” research.

What does it mean for an intervention to be “evidence-based”?

- Tier 4: Demonstrates a Rationale
 - Based on high quality research or evaluations; and
 - Includes on-going efforts to evaluate.

What does it mean for an intervention to be “evidence-based”?

➤ Tier 4: Demonstrates a Rationale

Explore Existing Research

Develop a Logic Model

Plan to Evaluate

What does it mean for an intervention to be “evidence-based”?

➤ ESSA Definition & Non-Regulatory Guidance

➤ **Practically Speaking**

Why is it important for Striving Readers grant applicants to understand how to leverage evidence-based interventions?

- Applications must include evidence-based interventions and describe:
 - Alignment between selected intervention, goals and educational context;
 - Tier of evidence
 - Additional detail if proposing Tier 4.

Why is it important for Striving Readers grant applicants to understand how to leverage evidence-based interventions?

- If proposing Tier 4 interventions:
 - Justification
 - Description of research base
 - Logic model
 - Plan to evaluate



5 Steps to Being Empowered by Evidence

5 Steps to Being Empowered by Evidence

1

Understand the value for your students and your district.

Five Steps to Being Empowered by Evidence

2

Consider your local context.

Different students. Different districts. Different needs.

Five Steps to Being Empowered by Evidence

3

Learn the basics.

Basic knowledge of the different tiers of evidence can help you choose what is best for your students' needs.

Five Steps to Being Empowered by Evidence

4

Make your interventions prove their worth.

Look at your data. What does it tell you about whether the intervention is working for you?

Five Steps to Being Empowered by Evidence

5

Check out the evidence-based resources on Striving Readers grant webpage and stay tuned for more guidance and resources from the department.

Questions?

Heather Boughton, Ph.D.

Director, Office of Research, Evaluation & Advanced Analytics

(614) 752-1402

Heather.Boughton@education.ohio.gov

education.ohio.gov

Join the Conversation



OHEducation



OHEducation



@OHEducation

@OHEducationSupt



OhioEdDept

education.ohio.gov/Text

SIGN UP FOR PARENT TEXT TIPS

**Elementary Students
Text "OHED EL" to 468311**

**Middle and High
School Students
Text "OHED HS" to 468311**

