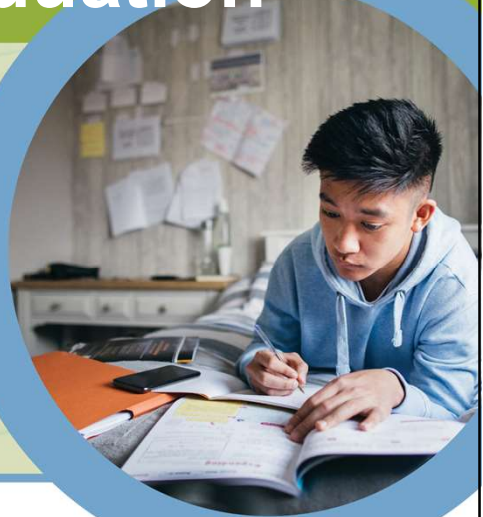


# Progress Towards Graduation



David Ehle & Graham Wood · May 3, 2021

## Session Agenda

- Why graduation reports?
- Review Graduation Requirements/Planning that drive the Progress Towards Graduation reports
- Review the EMIS data that feeds the reports
- Roles for access within ODDEX
- Give us more ideas!

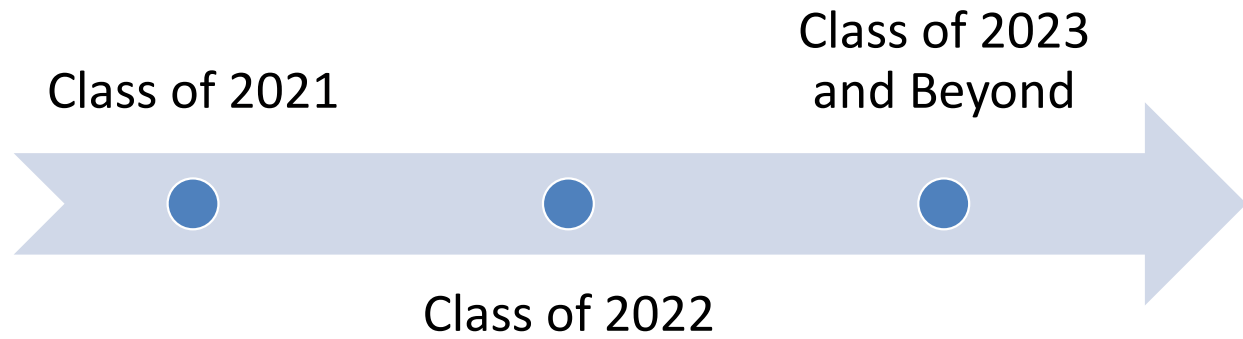
## Why graduation reports?

- Requirements are complex- establish a shared format for understanding a student's progress (especially transfers!)
- Also create school and district level reports for administrators to allow for planning and monitoring
- Formats at a high level (including for parents) as well as formats showing all the detailed data that went into showing requirements as met or not
- PDF reports to make it easy to share

## Graduation Planning & Data Connections

- Districts have started to complete graduation plans
- Much of the data to review during planning will be included in the progress towards graduation reports
- Spend some time reviewing a planning template and the EMIS data connections for each section of the template

## Progress Towards Graduation Reports



## 2021 and 2022 Graduation Pathways

18 End of Course Test Points

12 Points of Credentials and 14 on WorkKeys

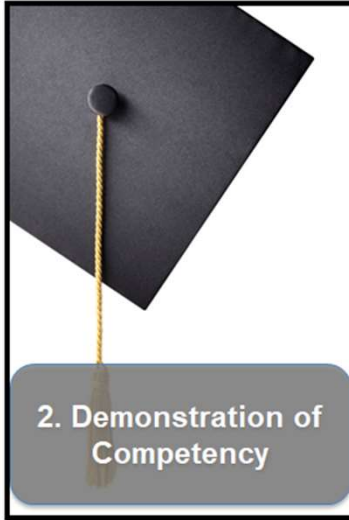
Remediation-Free score on ACT/SAT

Long-term graduation requirements

# Ohio's Long-Term Graduation Options



1. Course Requirements



2. Demonstration of Competency



3. Demonstration of Readiness

## Ohio Graduation Plan Template

This document is designed to serve as a template for Ohio school administrators, counselors, and teachers to help in their process of developing graduation plans for students in grades 9-12. This is not a required template. Make any edits necessary to customize this template to the needs of your school or district. We welcome any comments as to how to improve the template for future use. If you have comments or questions on this document, please email [gradrequirements@education.ohio.gov](mailto:gradrequirements@education.ohio.gov).

### BASIC INFORMATION

<b>Student Name:</b>		<b>SSID:</b>		<b>Graduating Class:</b>	
<b>Career Field Interests:</b>					
<b>Date Updated:</b>	<b>Grade 9:</b>	<b>Grade 10:</b>	<b>Grade 11:</b>	<b>Grade 12:</b>	

### POST-HIGH SCHOOL GOALS

Please note if the student plans to pursue college (and type), work (and industry sector), military, or something else. Please be as specific as possible. Examples: "I plan to further my education and enroll in a community college," or "I plan to find a full-time job in customer service."

**Goal:**

**Supports needed to achieve this goal:**

## Introduction

- Limited data in EMIS for this section
- EMIS does not have information on the expected graduating class, however
- Data will be available on the assigned graduation cohort

### REQUIRED CREDITS (20)

*Note: Districts and schools may have requirements that exceed the state minimums outlined below. Students must receive instruction in economics and financial literacy (in high school) and complete at least two semesters of fine arts\* (during grades 7-12). \*Fine arts may not be required for students in a career-tech program unless it is a component of local course requirements.*

Subjects	Middle School	9th Grade	10th Grade	11th Grade	12th Grade	Credit Tracker		
						Min Req	Earned	Needed
English						4		
Mathematics						4		
Social Studies						3		
Science						3		
Health						0.5		
Physical Education						0.5		
Economics/ Financial Literacy								
Fine Arts								
Electives						5		
School-Specific Reqs								
<b>Credit Totals</b>						20		

## Required Credits

- Credit earned to date is reported in EMIS
  - New collection window for existing GC record- Current Graduation Credit Progress- opened November 5<sup>th</sup>
  - Include any student who has earned grad credit
  - Current year students
  - Update throughout year as credit is earned
  - Credits reported by area, including specific requirements for advanced science, specific math courses, etc.

## Required Credits

- Also ability to list credit for courses in progress in the current year based on latest student schedule in EMIS
  - May be able to leverage grade information for those courses to indicate likelihood of earning credit
- Information on Fine Arts, Economics, and PE waivers collected in EMIS- but reporting currently has some issues
- Do not currently try to collect any school-specific requirements

ASSESSMENTS: *Reminder, students must take all end-of-course assessments					
<b>Algebra I (or equiv)</b>	Date Taken:	Score:	<b>Geometry</b>	Date Taken:	Score:
<b>English/Language Arts II</b>	Date Taken:	Score:	<b>Biology</b>	Date Taken:	Score:
<b>American History</b>	Date Taken:	Score:	<b>Substitute Science</b>		
<b>American Government</b>	Date Taken:	Score:	<b>Substitute Soc Stud</b>		

DEMONSTRATION OF COMPETENCY					
Students will demonstrate competency in the foundational areas of English language arts and mathematics by earning a passing score of <b>684</b> on Ohio's high school Algebra I and English II tests. If students do not earn this score after remediation and a second attempt at the test, they may demonstrate competency in another way (see "Competency Alternatives.")					
<b>Algebra I</b>			<b>English II</b>		
Score:			Score:		
Test Date:			Test Date:		
Demonstrates Competency?	Yes	No	Demonstrates Competency?	Yes	No
Support Provided:			Support Provided:		
Retest Score:			Retest Score:		
Retest Date:			Retest Date:		
Demonstrates Competency?	Yes	No	Demonstrates Competency?	Yes	No



13

## Assessments/Competency

- All assessments in this section, including substitutes, are collected in EMIS
  - Information on all test attempts across all districts is available
  - EMIS able to evaluate if Algebra I and English II scores meet the competency criteria



14







**DEMONSTRATION OF COLLEGE AND CAREER READINESS**

Students will demonstrate readiness for their post-high school paths by earning two diploma seals one of which must be a state-defined. The seals are listed below:

State-Defined Diploma Seals: (choose at least 1)				Locally Defined Seals:	
Seal	Options	Seal	Options	Seal	Options
Science Seal:	Proficient on Biology EOC Exam	Technology Seal	"2" or Higher on AP or IB Score	Community Service Seal	Complete a community service project aligned with locally approved guidelines
	"2" or Higher AP or IB Score		"B" or higher in qualifying CCP Course		
	"B" or higher in qualifying CCP course		Completing local course		
Citizenship Seal	Proficient on Am Hist and Gov EOC Exams	State Seal of Biliteracy	Students must show proficiency in English and high levels of proficiency in a second language	Fine Arts and Performing Seal	Demonstrate skill in a fine or performing arts according to a locally approved evaluation
	"2" or Higher AP or IB Scores (Both)				
	"B" or higher in qualifying CCP courses (Both)				
Military Enlistment Seal	Provide evidence of enlistment into the military	Honors Diploma Seal	Earn any of Ohio's Honors Diplomas	Student Engagement Seal	Participate in extracurricular activities to a meaningful extent as determined by locally approved guidelines
	OR				
	Participate for 2 years in a JROTC Program				
Industry-Recognized Credential Seal	Earn 12 points of industry-recognized credentials from a single career field	College-Ready Seal	Earn a remediation-free score on the ACT or SAT		
OhioMeansJobs Readiness Seal	Show aptitude in 15 professional skills, as endorsed by three mentors.				

**Student-Earned Seals**

Students and counselors should track the progress of earning seals in order to remain on track for graduation. One of their chosen seals to earn **MUST** be a state-defined seal. Students can earn more than two seals if they choose to do so.

Name of Seal (1):	Name of Seal (2):
How the student will earn the seal:	How the student will earn the seal:
Date Completed:	Date Completed:
Additional Seals Earned:	



## Graduation Seals

- EMIS includes program codes that record the seals that a student plans to earn
- EMIS can derive when some seals have been earned based on assessment and other relevant EMIS data
- EMIS has added program codes for those seals that can not be derived based on other data
- Will be especially helpful when students change districts



## Planned vs. Earned Seals

- The **Planned** program codes allow us to display the planned seals on the reports
  - Especially helpful for changes in building/district
  - If plans change, update the code reported
  - Can still earn even without planned first
  - Can stop reporting (or keep reporting) once a seal is earned- whatever is easiest
- The **Earned** program codes mean all requirements done- but some are derived based on assessment or other data

## Is There More?

- Anything you think we are missing?
- Any additional type of data you review when you evaluate readiness for graduation?
- Any additional judgement/checklist that you complete when you evaluate readiness for graduation?
- Any other information-related problem or challenge that we may be able to help solve around graduation?

## Access to the PTG Reports

- New OEDS role will be added to give student level and district/building level report access
- Existing EMIS Coordinator and ITC staff roles will have access by default when module launched
- Existing Superintendent role will have access at launch
- Additional roles for access at launch to be identified
- Launch in late summer/early fall- lots more info to come before then

## Focus Groups

- Many focus groups needed throughout the project
- Small groups (usually 5-8) so that a conversation can take place, but we can have multiple groups for the same topic
- Will invite volunteers from the volunteer pool to RSVP for specific groups
- Should be able to accommodate all volunteers, but may be staff capacity limits in some cases

## Focus Groups

- For each group, ODE will share
  - The Focus Question(s) for the group
  - A description of the background of the ideal volunteers
  - The time commitment (number of sessions and length) for the specific group
  - Any requested preparation for volunteers to complete before the first meeting (such as reviewing a document)
  - The desired outcome of the session(s)

## Still Adding Volunteers!

- Have nearly 80 volunteers beyond this workgroup, but if you know of additional people who are interested, have them email [EMIS@education.ohio.gov](mailto:EMIS@education.ohio.gov)
- Include their name, district, role in the district, and note that you referred them