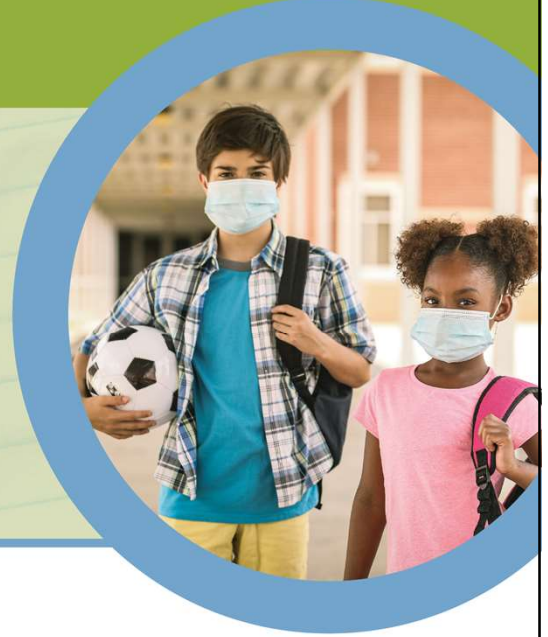


EMIS Updates



David Ehle · December 4, 2020

Today's Agenda

- SLDS Update
 - Claiming Module
 - New data for grad reports and EWS
 - Focus groups in future
- Upcoming Data Collector update
- CCP Closeout
- New reporting options
 - District (or building) learning mode
 - Student access to hardware and the internet

SLDS Grant

- Statewide Longitudinal Data System grant awarded to ODE this spring
- Four projects related to the use of data, in support of ODE's strategic plan
- Grant through fall of 2023, with an extension possible

Graduation Risk Project Components

- Three main parts to this project
 - Enhancement of existing systems and data set in support of the project
 - Reports on progress towards graduation
 - Calculation of risk/Early Warning System (EWS) related to likelihood of graduation
- The system will be implemented as new functionality with ODDEX

ODDEX Enhancements

- Student Claiming: To provide graduation information at time of enrollment, allow LEAs to claim a student as a new student, with SSID, with 15 minutes in ODDEX
- Data to Predict Risk: Collection of grades in all courses with high school credit (and possibly grades 7 and above), both final and intermediate grades
- Reports: add functionality to ODDEX to produce PDF reports

Student Claiming

- Allow faster access to data within ODDEX (Ohio District Data Exchange)
- Uniquely determine a student's SSID based on:
 - Name, gender & date of birth
 - Prior school/district attended
 - Prior math and ELA teacher names
- Direct entry of data in ODDEX
- New roles for staff to have access to this functionality

Student Claiming

- Goal is to have access to ODDEX student records within 15 minutes of first contact with parent/guardian (often less)
- Getting access to data requires affirmation that the student is enrolling in your district
 - Student will be expected to be included in EMIS submissions soon thereafter, including Student Cross Reference submission
 - Any districts where the student is currently enrolled will receive notification of student's intent to transfer- student will begin to be included in SCR checks

Access to the Student Claiming Module

- Two new OEDS roles added
 - Data View-SCM: read-only access- no claiming
 - Enrollment Staff-SCM: can claim student
- Existing EMIS Coordinator and ITC staff roles will have read-only access by default when module launched
- Existing Superintendent role will have full access at launch
- Launch in late winter- lots more info to come before then

Data to Predict Risk

- For progress towards graduation and early warning system, need additional data in EMIS
 - Discipline
 - Attendance
 - Course grades
 - Credit progress
 - Graduation seals
 - Assessments

Collecting Course Grades

- New record type- Student Course Grade (FR)
- New collection window- Student Course Grade- opened October 22nd, closes September 15th 2021
- Grades are only required at this time for courses that earn high school credit
 - This includes credit courses before grade 9
 - may expand in future to include all middle school
- Grades can be reported for any course, credit or not

Collecting Course Grades

- Final course grades are required
- Interim grades are required if a grade is issued for a specific term and if you are the one teaching the course
- Interim term grades are strongly encouraged but not required for contracted courses, CCP courses, and JVSD satellite courses
- Grades are reported by the entity that reports the student course/course master records- so must get final grades for above “interim” exceptions
- In Progress grades may also be reported, but are not required

Collecting Course Grades

Grade Status

Record Field Number	FR90
Definition	Indicates if the grade reported indicates the grade at the end of a term or a preliminary grade for the term

Valid Options

- F The summative or final grade for the course
- I A grade issued to a student that indicates the student’s performance for a specific grading period or term of the course
- P A grade that represents a student’s progress to date in a term of the course that had not yet ended

Collecting Course Grades

- Grades reported could be
 - A to F for most courses
 - P or F for pass/fail courses
 - I if work is incomplete and the student is still allowed to finish work after the end of the term, and
 - U if the grade is unknown for the term
- Grades will not be updated beyond the end of the reporting window
- ODE will not be able to calculate a GPA or create a transcript

Collecting Course Grades

- Terms will vary from one district to the next
 - Could be just semester grades as final grades
 - May have semester grades plus a final yearend grade
 - Also have term options for 6 week, quarters/9 weeks, and trimester/12 week grading periods
- As the year progresses, the terms reported and the status of the grades for those terms will change

Additional Graduation Data

- Credit progress
 - New collection window for existing GC record- Current Graduation Credit Progress- opened November 5th
 - Include any student who has earned grad credit
 - Current year students
 - Update throughout year as credit is earned
 - A few new credit area options were added for computer science credits that count in a different area

Additional Graduation Data

- Graduation seals
 - For FY20, already added program codes for earned
 - In FY21, added program codes, where relevant, for
 - Seals that a student plans to earn
 - Specific parts of a seal requirement that a student has completed
- Assessments
 - A few assessments count towards seals that do not already have specific assessment codes

Stakeholder Input

- Workgroup of the EMIS Advisory Council
- Focus groups over specific topics
 - EMIS staff, guidance counselors, administrators
 - ODDEX user interface, report design, summative data
- Have over 70 volunteers, but if interested, email EMIS@education.ohio.gov
- Focus group meetings starting soon and ongoing

Upcoming Data Collector Update

- New version of the Data Collector to be released soon
- New option related to Level 2 reports
 - Current options are HTML or CSV
 - Adding 2 new options related to CSVs
 - One file per building IRN
 - One file per other field, determined by ODE
 - If more than one file created, download will be a zip file

CCP Closeout

- In general, data updates from High Education are closed for FY16-FY20
- Area Coordinators are working through all the courses from those years that have been escalated
- Also a chance to fix any split courses
- Plan is to have everything from these years resolved no later than January 15th, with final payments and deductions for those years at the end of January

COVID-Driven Data Collections

- New data to be collected in EMIS using existing EMIS elements and record types
- New data is either part of the DN Organization - General Information record (new attribute names) or through new student level GQ program codes
- New data is reported in the S collection
 - District (or building) learning mode
 - Student access to hardware and the internet

Why Collect?

- Better understand student experience and needs
- Connect to other data in EMIS
- Between the 2 sets of data, able to add more information to review assessment results
- Recently \$50 million made available for student connectivity

District (Or Building) Learning Mode

- Reported on DN record
- Only have to report first day learning mode and when there is a change in learning mode
- Three options- all in, hybrid, and remote
- Only report building level if different from district mode
- Two types of program codes for student exceptions
 - Student is full time online for a specific period of time, regardless of district more
 - Student comes in for services more than learning mode

Student access to hardware & internet

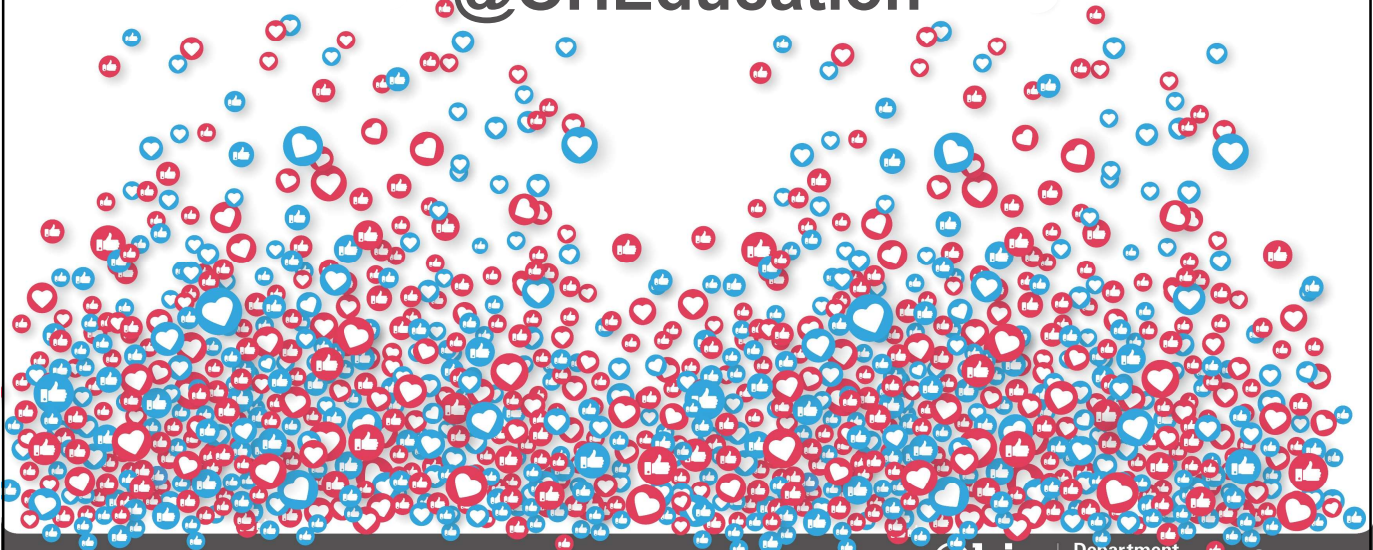
- Collected with program codes, unless district provides to all within a grade level (then a DN)
- Program code for Hardware
- Program code for internet access
- One-time: March snapshot
- More details to vendors and ITCs next week



YouTube



@OHEducation



**Share your learning
community with us!**

#MyOhioClassroom



Celebrate educators!

#OhioLovesTeachers