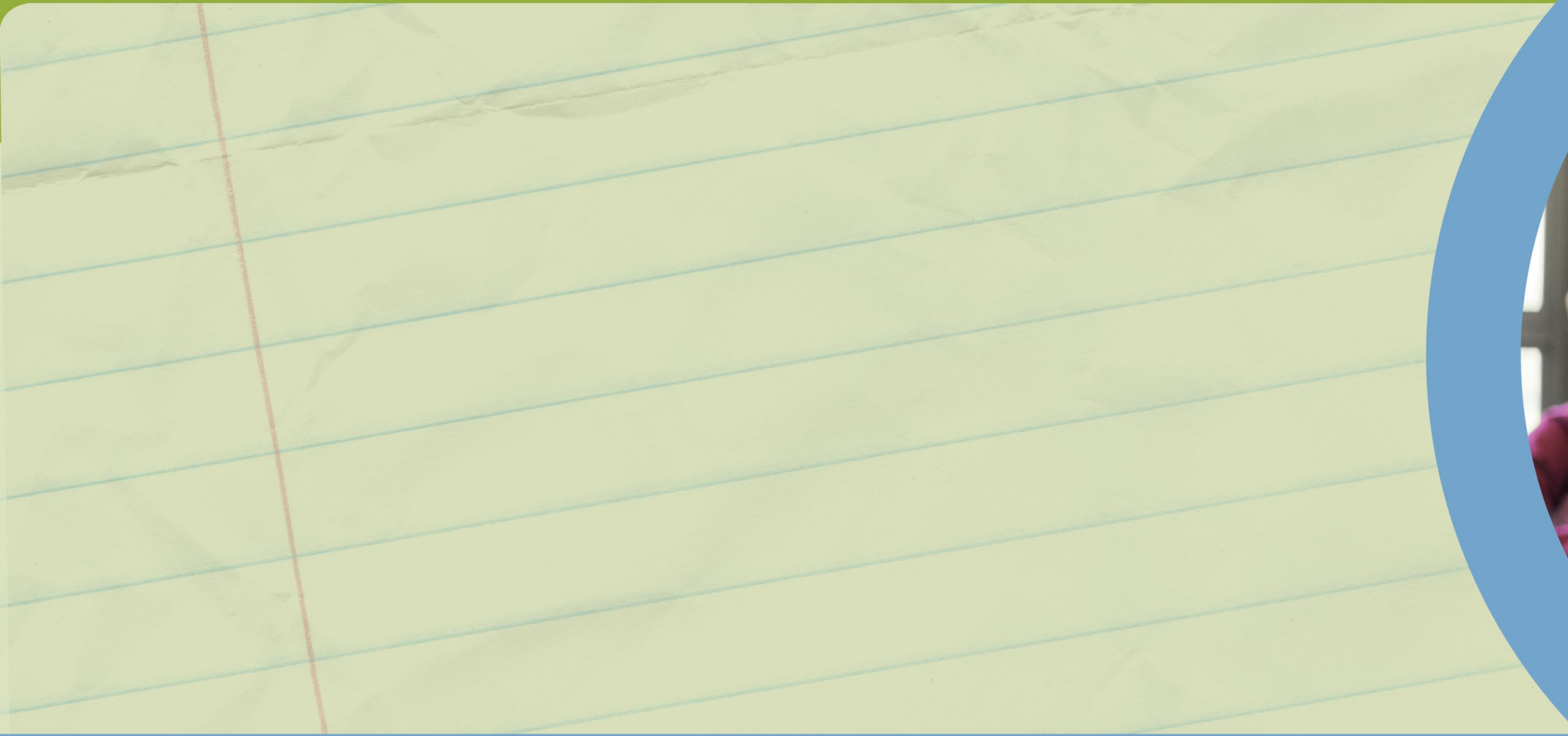


EAC SLDS Grant Workgroup



December 1, 2022

Today's Agenda

- Review Agenda/Roll Call/May 2022 Meeting Minutes
- Review data to be included in the Early Warning System
- Collect EWS feature requests
- Review Progress Towards Graduation module
- Potential new EMIS reporting for EWS module use

Approval of May 2022 Meeting Minutes

- Please review the [draft May meeting minutes](#) (also attached to today's meeting invite).
- *Is there a motion to approve the meeting minutes and a second?*

Early Warning System Data

- At its foundation, the ODDEX EWS will focus on ABC:
 - Attendance (10% absent for a particulate time period)
 - Behavior (1 or more days of suspension or expulsion)
 - Course grades (failed 1 or more credit-bearing courses)
- Additional data available in these areas
- The above criteria are binary- applies to a student or not
- Some warning system models use more in-depth data

Early Warning System Data

- The data used in the system will grow over time
- The eventual goal is to create a machine learning model that uses as much data as possible to identify at-risk students
- There are options between the ABC flags and the machine learning model
- The question- do more now, or only flags now and then machine learning model later?

Early Warning System Data

- Review possible data to use now
- Discuss the pros and cons of a simple, general indication of possible issues (ABC) vs. a more complex approach that distinguishes levels of risk (Low, Medium, High, Ultra) using more data

Early Warning System Feature Requests

- Work on the user interface for the EWS will begin soon
 - What types of reports would you like to have?
 - How do you think you would use the system?
 - Work within the system vs. exporting lists?
 - What types of users would you have in your district?
 - Other ideas?

Progress Towards Graduation Review

- Release very soon
- Review user interface
- Review catalog of reports to be included

Early Warning System Additional Data

- Some early warning systems use data we do not currently collect in EMIS
- Should we add optional EMIS reporting of this data for use by our EWS?
 - Middle school grades (non-credit courses)
 - Discipline incidents where the Type of Discipline is less severe than suspension
 - Better extracurricular data collection
 - Other data you use locally



@OHEducation

